



St. Leonards Road, Eastbourne, BN21 3UU

£1,300 Per Calendar Month

St. Leonards Road, Eastbourne, BN21 3UU

Ansvar House is collection of 20 stylish apartments developed just over 1 year ago, designed for contemporary living in the centre of Eastbourne. If you are looking for the perfect place to call home, these apartments offer a unique blend of modern design, convenience, and comfort.

Each apartment has been thoughtfully designed to maximize space, light, and functionality. This particular flat benefits from large windows overlooking the front of the property avoiding any light blocking, allowing for bright, spacious open plan living.

The open plan living space offers a modern kitchen with washing machine, fridge/freezer and integrated dishwasher as well as a enough space for dining!

Also benefitting from a large storage cupboard, two double bedrooms and a modern bathroom with shower over bath.

Featuring, modern electric heating, an entry intercom system, a lift to all floors and allocated parking for 1 vehicle. This is a pet friendly development we welcome applicants who have pets.

The apartments are located just a 5 minute walk from the centre of Eastbourne allowing you to enjoy easy access to shops, restaurants, parks, and excellent transport links, making commuting and leisure effortless.

Please note:
Annual Income Threshold: £39,000



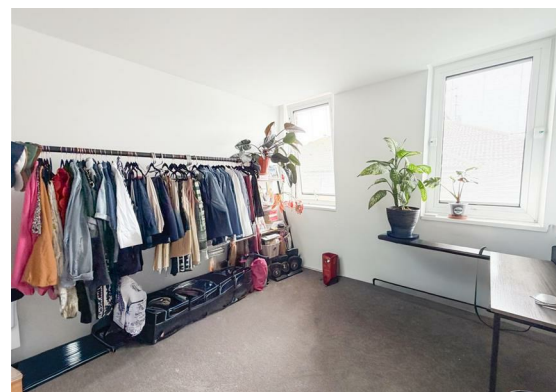


Kitchen/Living/Dining Room
18'8" x 12'6" (5.69m x 3.81m)

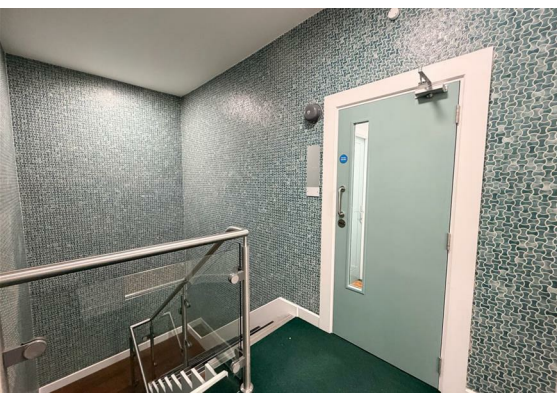
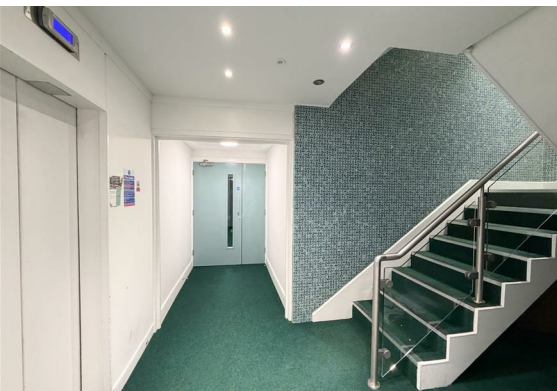
Bedroom One
13'9" x 9'6" (4.20m x 2.90m)

Bedroom Two
10'2" x 9'2" (3.10m x 2.80m)

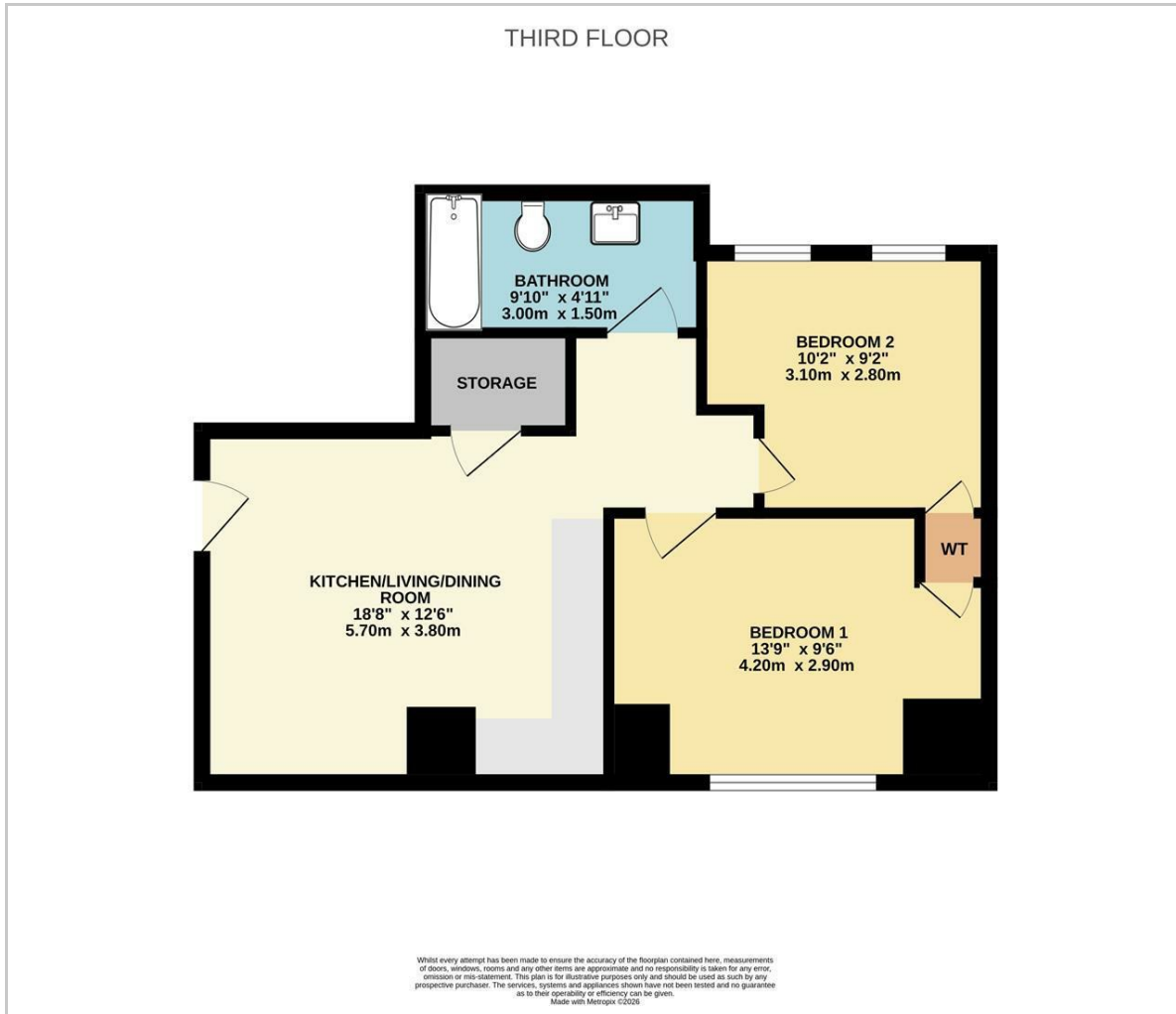
Bathroom
9'10" x 4'11" (3.00m x 1.50m)



Council Tax Band C - £2,359.37 Per Annum



Floor Plan



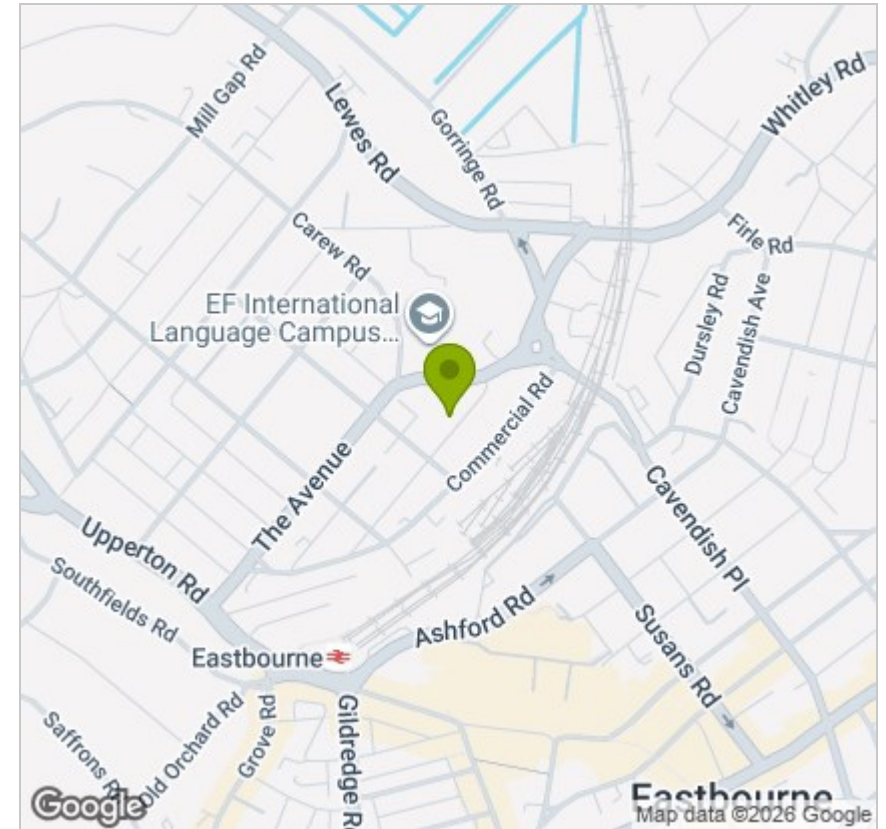
Viewing

Please contact us on 01323 405553 if you wish to arrange a viewing appointment for this property or require further information.

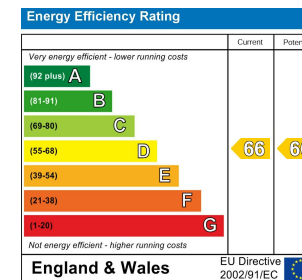
These particulars, whilst believed to be accurate are set out as a general outline only for guidance and do not constitute any part of an offer or contract. Intending purchasers should not rely on them as statements of representation of fact, but must satisfy themselves by inspection or otherwise as to their accuracy. No person in this firm's employment has the authority to make or give any representation or warranty in respect of the property.

35 Cornfield Road, Eastbourne, East Sussex, BN21 4QG
eastbourne@oakfieldproperty.co.uk

Area Map



Energy Efficiency Graph



01323 405553
www.oakfieldproperty.co.uk